

DOMINATE YOUR FIELD

One of the smartest routes to high yield potential is through effective weed control – but you already know that. Here’s how TruFlex™ canola with Roundup Ready® Technology can help make it happen:

IMPROVED CONTROL OF TOUGH WEEDS

The flexibility of the TruFlex canola system will allow for the control of harder-to-kill weeds like cleavers, foxtail barley and wild buckwheat. It will also help enable season-long dandelion control.

FLEXIBILITY IN SPRAY RATES AND TIMING

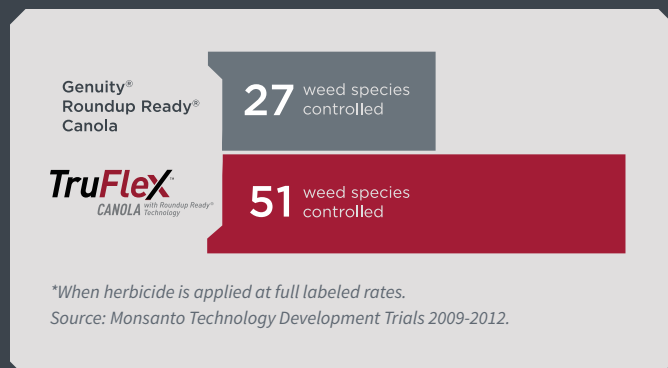
TruFlex canola will have a wider application window than our current technology. If weather or a late flush of weeds delays your spray date, no problem – you will be able to spray up to first flower when applying sequential rates of 0.67 L/ac. The TruFlex canola system will also enable flexibility with your Roundup WeatherMAX® herbicide application rate to help get the job done.

HIGHER YIELD POTENTIAL THROUGH GENETICS AND CROP SAFETY

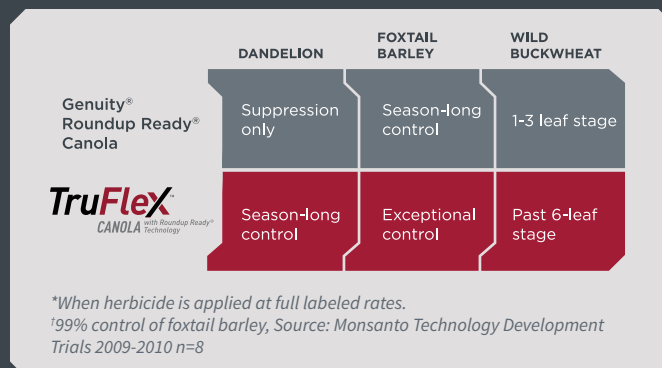
New genetics have packed a lot of yield potential into each TruFlex canola seed. New advances in trait technology will help enable better weed control and crop safety compared to Genuity® Roundup Ready canola. It’s a combination that could give you the opportunity to see much more yield potential pass through the combine at harvest time.

SYSTEM COMPARISON

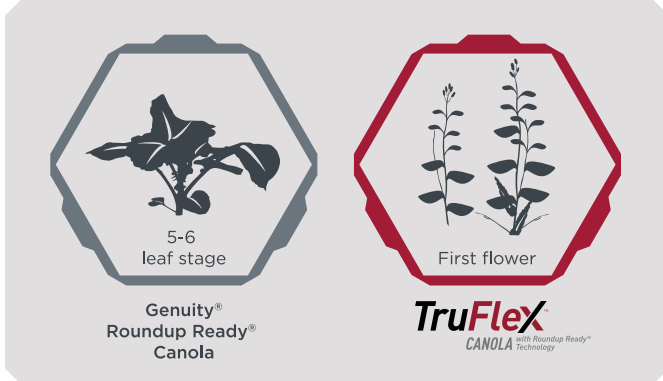
CONTROL A WIDER SPECTRUM OF WEEDS



CONTROL ANNUALS AND TOUGH PERENNIALS

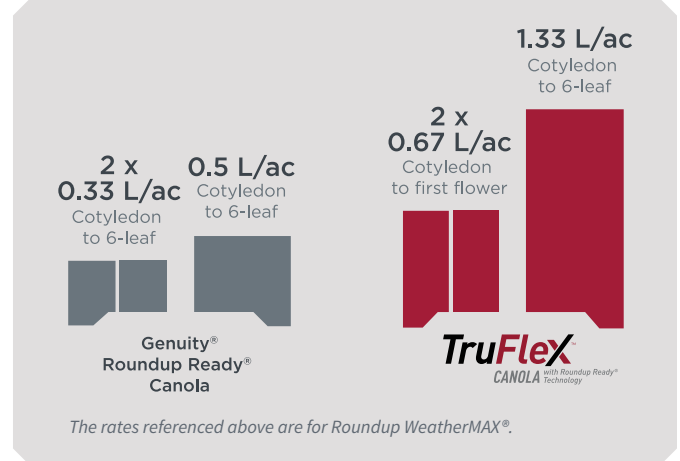


GET UP TO 10-14 MORE SPRAY DAYS AT IN-CROP TIMING

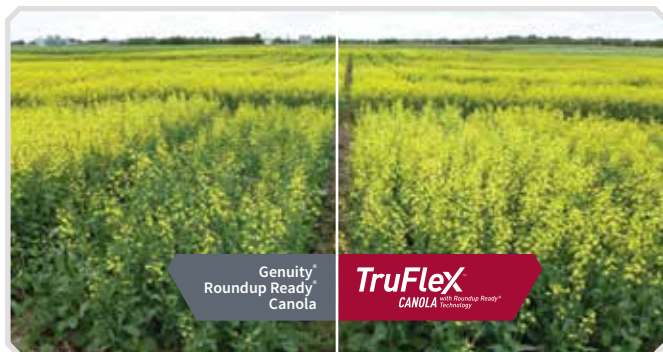


The window of application for Roundup WeatherMAX® herbicide will extend past the six-leaf stage all the way to the first flower when applying sequential rates of 0.67 L/ac.

THE RATE FARMERS NEED FOR THEIR WEED CHALLENGES



Farmers will be able to apply Roundup WeatherMAX herbicide in-crop at 1.33 L/ac for a single application or 0.67 L/ac for two applications.



THE SOURCES OF YIELD POTENTIAL FOR TRUFLEX™ CANOLA WITH ROUNDUP READY® TECHNOLOGY

Elite Germplasm

The features farmers need for their growing conditions.

Crop Safety

The TruFlex™ canola system will allow for the application of higher rates of Roundup WeatherMAX herbicide.

TruFlex canola with Roundup Ready Technology is not yet commercially available.

Find more information on TruFlex™ canola with Roundup Ready® Technology:

Visit TruFlex.ca

Get advice on weed management:

Visit MonsantoCMS.ca

Monsanto Company is a member of Excellence Through Stewardship® (ETS). Monsanto products are commercialized in accordance with ETS Product Launch Stewardship Guidance, and in compliance with Monsanto's Policy for Commercialization of Biotechnology-Derived Plant Products in Commodity Crops. Genuity® Roundup Ready® canola has been approved for import into key export markets with functioning regulatory systems. Any crop or material produced from these products can only be exported to, or used, processed or sold in countries where all necessary regulatory approvals have been granted. It is a violation of national and international law to move material containing biotech traits across boundaries into nations where import is not permitted. Farmers should talk to their grain handler or product purchaser to confirm their buying position for these products. Excellence Through Stewardship® is a registered trademark of Excellence Through Stewardship.

ALWAYS READ AND FOLLOW PESTICIDE LABEL DIRECTIONS. Roundup Ready® Technology contains genes that confer tolerance to glyphosate, an active ingredient in Roundup® brand agricultural herbicides. Agricultural herbicides containing glyphosate will kill crops that are not tolerant to glyphosate.

TruFlex™ canola with Roundup Ready® Technology is not currently available for commercial sale or commercial planting. The information presented herein is provided for educational purposes only, and is not and shall not be construed as an offer to sell.

Genuity®, Roundup Ready®, Roundup WeatherMAX®, Roundup® and TruFlex™ are trademarks of Monsanto Technology LLC, Monsanto Canada Inc. licensee. ©2013 Monsanto Canada Inc.